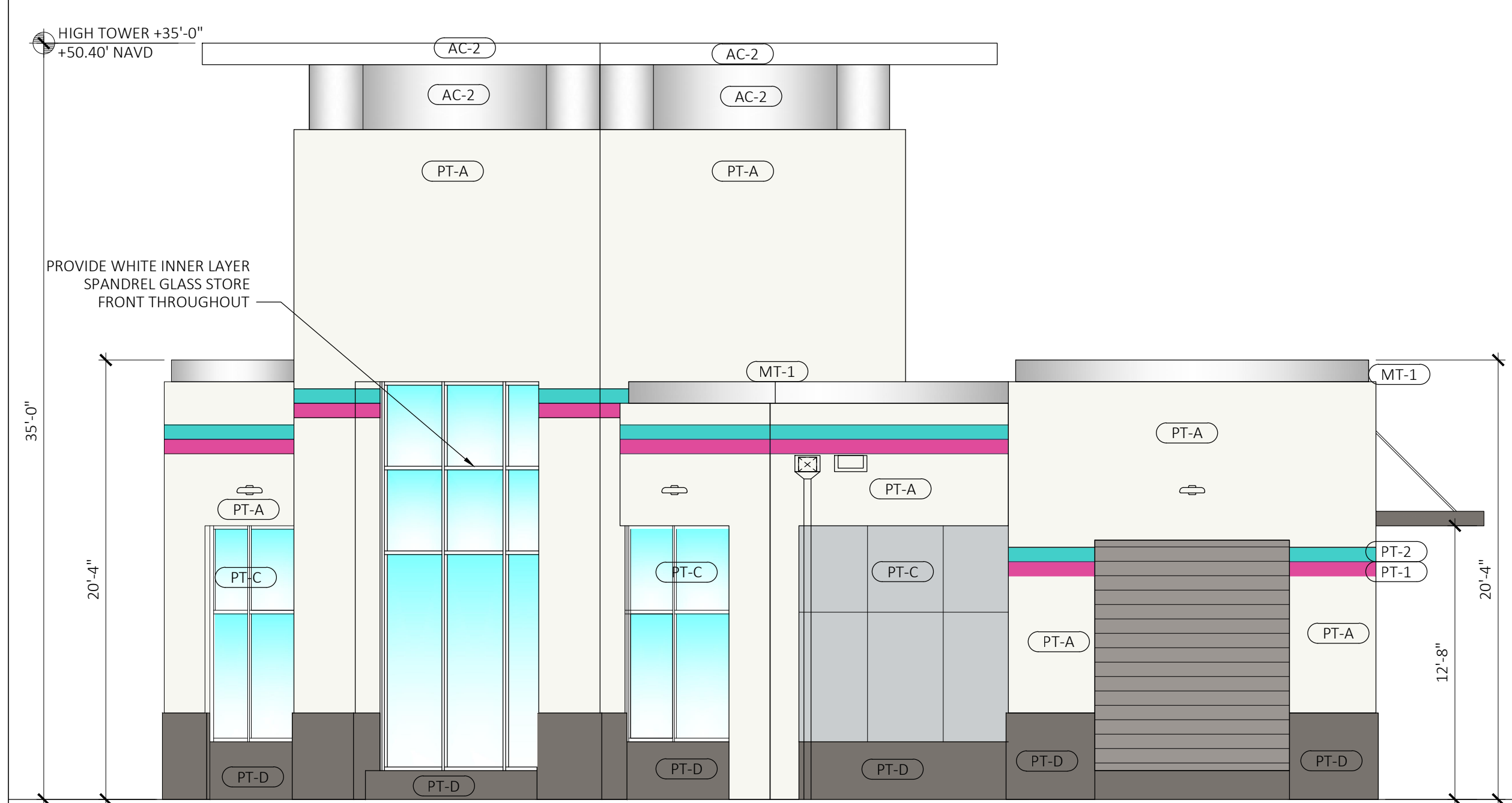
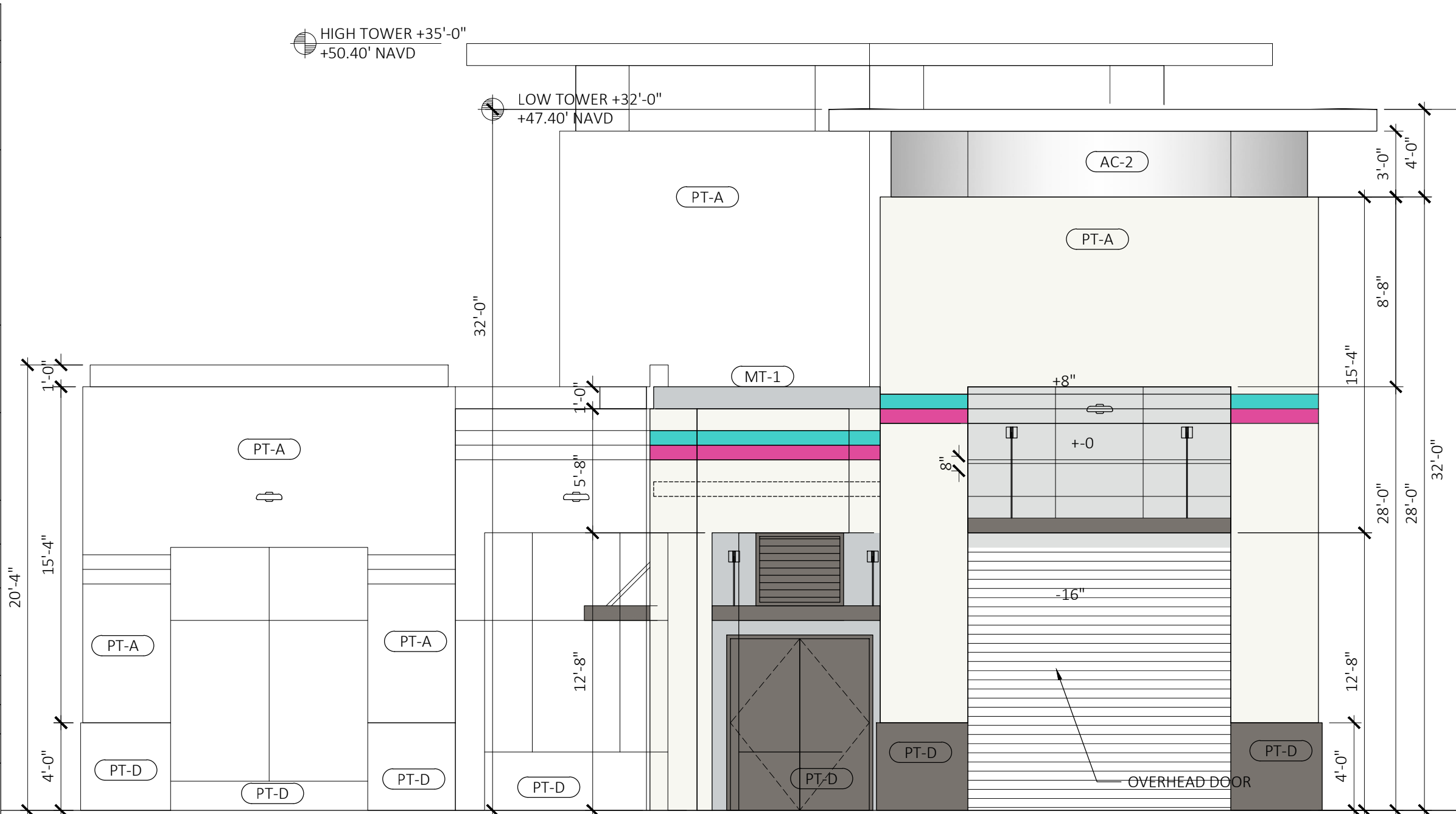


1 NORTH ELEVATION - SAMPLE ROAD  
SCALE: 3/16"=1'-0"

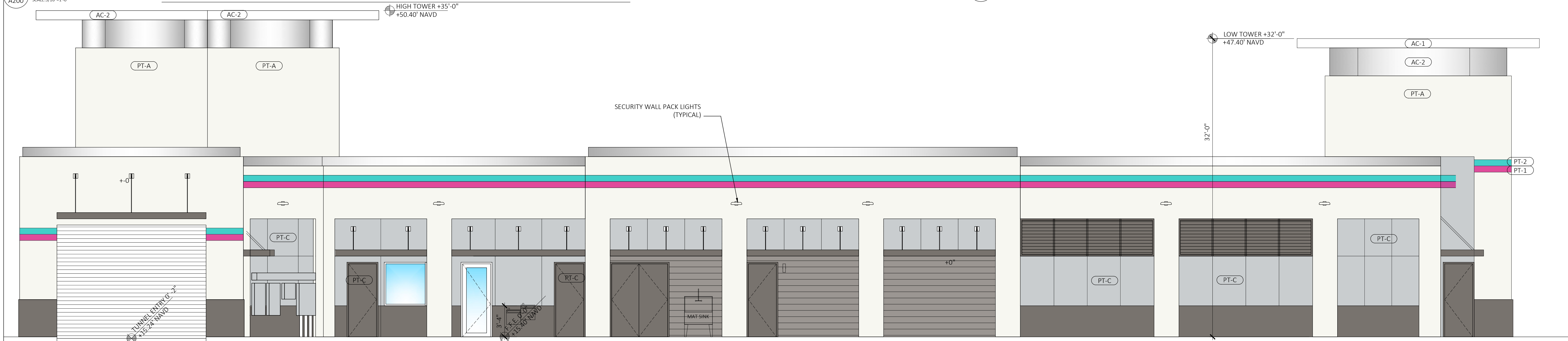


2 WEST ELEVATION - 27 AVENUE  
SCALE: 3/16"=1'-0"

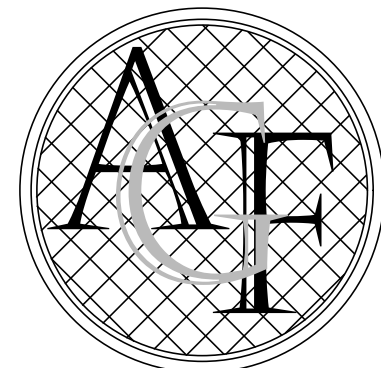
EXTERIOR FINISHES				
	Tag	NAME	Code No.	Manufacturer
	PT-1	ECW-PINK	Pantone 232	SHERWIN WILLIAMS
	PT-2	ECW-TEAL	Pantone 3252	SHERWIN WILLIAMS
	PT-A	High Reflective White	SW 7757	SHERWIN WILLIAMS
	PT-B	Rhinestone	SW 7656	SHERWIN WILLIAMS
	PT-C	Evening Shadow	SW 7662	SHERWIN WILLIAMS
	PT-D	Gauntlet Gray	SW 7019	SHERWIN WILLIAMS
			SW 7019 RAL Metal Surfaces	KYNAR 500
	WT-E	Resemblance Medium Gray	RB12 Medium Gray Tile 87 Stormy Gey Grout	DALE TILE LATICRETE PERMACOLOR
	WF-1	Bright Silver	PPG UC57638XL	KYNAR 500
	MT-1	Metal cap flashing	Brilliant SILVER	CAP FLASHING
	AC-1	Roof Overhang	Metallic-PVDF-3	ALUCO-BOND
	AC-2	REFLECT MIRROR	REFLECT MIRROR	ALUCO-BOND



3 EAST ELEVATION - EXIT  
SCALE: 3/16"=1'-0"



4 SOUTH ELEVATION - INTERIOR SIDE  
SCALE: 3/16"=1'-0"



FANJUL & ASSOCIATES, LLC  
ARCHITECTURE, PLANNING & INTERIOR DESIGN

AA26000725

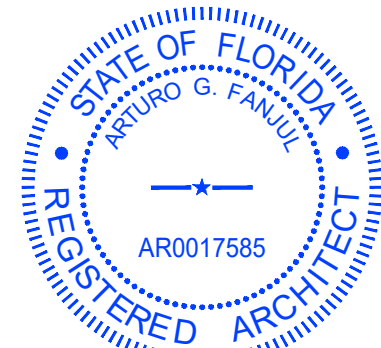
ARTURO G. FANJUL, RA  
PRESIDENT

5455 SW 8TH STREET, SUITE 240  
CORAL GABLES, FLORIDA 33134

PH. 305 726.8313  
FAX 305 356.3686

arturo@fanjularchitects.com

"A BETTER LIFE THROUGH DESIGN"



ARTURO G. FANJUL AR0017585  
STATE OF FLORIDA REGISTERED ARCHITECT

This item has been electronically signed and sealed by:

Printed copies of electronically signed, dated, and sealed documents are not considered signed and sealed and the SIA authentication code must be verified on any electronic copies.

DESIGN REVIEW



WEST POMANO

2960 W SAMPLE ROAD  
POMPAÑO BEACH, FL 33069  
ID:48422107031/32/32

COLOR ELEVATIONS

REVISION	NO.

DATE: 9/17/2025  
SCALE: AS NOTED  
DRAWN: AGF  
CHECKED: AGF  
JOB NO. 24-0704  
PERMIT NO.

OWNERSHIP  
OF THESE DOCUMENTS & SPECIFICATIONS AS INSTRUMENTS OF SERVICE ARE AND SHALL REMAIN THE PROPERTY OF THE ARCHITECT WHETHER THE PROJECT THEY ARE MADE FOR IS EXECUTED OR NOT. THEY SHALL NOT BE USED BY OWNER OR OTHERS ON OTHER PROJECTS OR FOR ADDITIONS TO THIS PROJECT BY OTHERS, EXCEPT BY AGREEMENT IN WRITING AND WITH APPROPRIATE COMPENSATION TO THE ARCHITECT.

A200